

OVERVIEW

The DS40 and DS-RX1 printers have the ability to cut a 4x6 print into two 2x4 prints or a 4x8 print into four 2x4 prints. The proper driver and firmware versions must be used in order to enable the 2" cuts.

DS40

The proper firmware and a hardware modification are required. These are standard starting with printers manufactured in March 2012. The serial numbers for these printers begin with DS4Y250 and up. DS40 printers manufactured before March 2012 can be upgraded with the hardware modification for a flat fee of \$99 which includes return shipping. This includes installation of cutter guide, firmware upgrade, driver CD, return ground shipping. Contact [DNP Support](#) to order your hardware upgrade or if you have any questions about this product. Printer drive version 3.2 is required for Windows. It is not available on the [DNP website](#) as it can cause damage to a printer not properly equipped for the 2" cuts. This driver is available through [DNP Support](#). The proper firmware is also available from [DNP Support](#) if needed.

Support for 2" cuts on a Mac is integrated into the printer drivers that are available on the DNP website.

RX1

The RX1 printer has the firmware and parts already installed to make the 2" cuts. The correct printer driver comes with the printer and is available on the [DNP website](#) for both Windows and Mac.

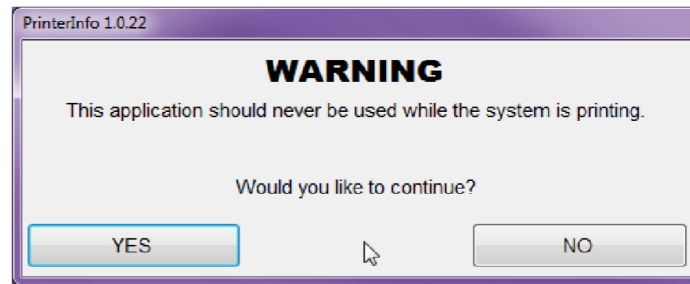
VERIFY FIRMWARE VERSION – WINDOWS ONLY

NOTE:

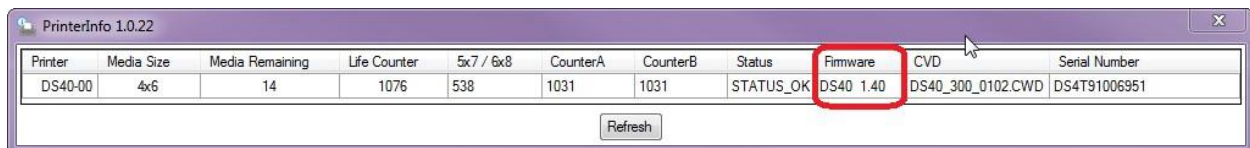
PrinterInfo will only work on a Windows computer.

1. Download and install the PrinterInfo tool from the DNP Photo website.
 - a. Open a browser window.
 - b. Navigate to <http://www.dnpphoto.com/> or click this link [go to the website](#).
 - c. Hover over Support, go down to Downloads and click on Drivers & Tools.
 - d. Click AGREE on the Software License Agreement page.
 - e. Scroll down to the bottom of the page. PrinterInfo is located at the bottom of the right column. f. Click on FULL INSTALLER.
 - f. Navigate to the location of the downloaded file.
 - g. Run the file, setup_PrinterInfo_1.0.22_with.NET-installer.exe to install the tool.
 - h. Verify that the DS40 printer is attached to the computer and turned on.
2. Launch PrinterInfo from the icon on your Desktop.

- Click YES to continue ONLY if the system is not printing.



- Verify that the Firmware field reads DS40 1.40.



Printer	Media Size	Media Remaining	Life Counter	5x7 / 6x8	CounterA	CounterB	Status	Firmware	CVD	Serial Number
DS40-00	4x6	14	1076	538	1031	1031	STATUS_OK	DS40 1.40	DS40_300_0102.CWD	DS4T91006951

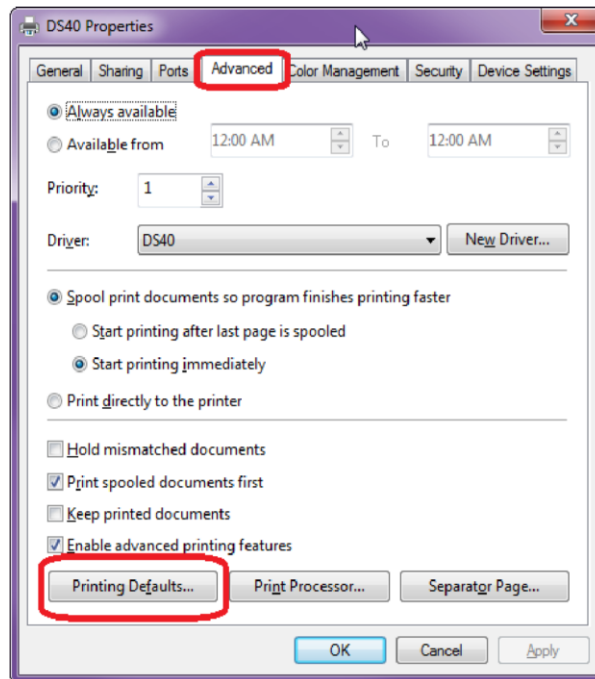
Refresh

- If you do not have firmware version 1.40, please contact [DNP Support](#).

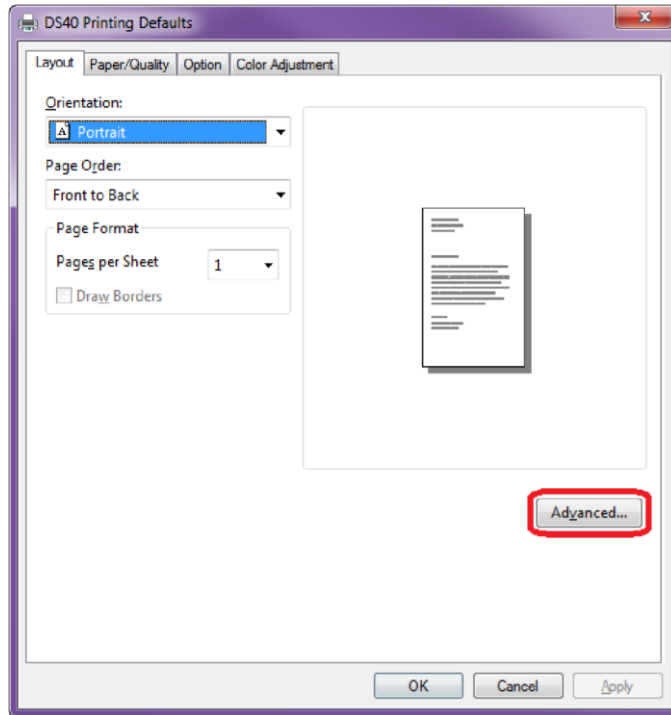
ENABLING 2" CUTS

WINDOWS 7 AND 8

1. Open **Devices and Printers** from the **Start** menu or from **Control Panel**.
2. Right-click on the DS40 printer.
3. Click **Printer Properties**.
4. Switch to the **Advanced** tab.
5. Click the **Printing Defaults** button at the bottom.



- Click the **Advanced** button near the bottom.



- Verify that the selected paper size under **Paper/Output** is (6x4).

NOTE:

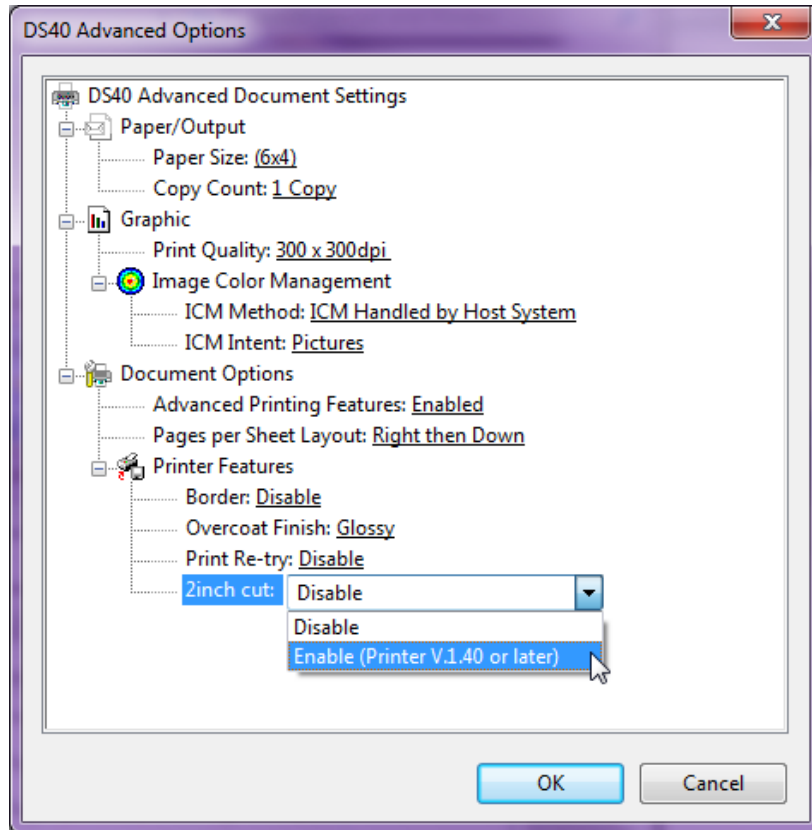
The proper paper size must be selected for the printer to make the 2" cuts. The proper size is 6x4 or 6x8 depending on the media being used

- Click the dropdown arrow next to **2 inch cut** under **Printer Features** under **Document Options**.
- Select **Enable (Printer V.1.40 or later)**.

2 Inch Cut	Function
Disable	It cuts either a 6x4 sheet or a 6x8 sheet depending on the selected paper size.
Enable	It cuts two 4x2 sheets for the 6x4 paper size or four 4x2 sheets for the 6x8 paper size.

- Click **Okay**.
- Click **Apply** and then **Okay** to return to the **DS40 Properties** dialog box.
- Switch to the General tab.
- Click the **Preferences** button at the bottom.
- Click the **Advanced** button near the bottom.
- Verify that the selected paper size under **Paper/Output** is (6x4).

16. Click the dropdown arrow next to **2 inch cut** under **Printer Features** under **Document Options**.
17. Select **Enable (Printer V.1.40 or later)**.



18. Click **Okay**.
19. Click **Apply** and then **Okay** to return to the **DS40 Properties** dialog box.
20. Click **Apply** and then **Okay** to close the **DS40 Properties** dialog box.

The 2 inch cuts are now fully enabled.

MAC OS

1. Enable CUPS (Common Unix Printer Service) web-based printer management interface. There is no other place in the Mac OS interface where you can enable this feature.
 - a. Open **Terminal**.
 - b. Type `cupsetl WebInterface=yes`.
2. Open **Safari**.
3. Type <http://127.0.0.1:631/printers> in the address bar. You will see the list of current installed printers.

4. Click on the RX1 to display the information for the RX1. There is two drop down boxes on the left side- **Maintenance** and **Set Default Options**.
5. Click **Set Default Options**, the printer settings in the middle of the screen.

- Click the dropdown next to Cutter at the bottom of the list.

- Select 2" cuts.

- Click the Set Default Options button. (This will ask you for the Mac's Screen name and password).

CONTACT DNP SUPPORT FOR FURTHER ASSISTANCE

Phone: 888-749-3587

Email: dnpsupport@dnpphoto.com

Weekday Hours: Monday-Friday 9am EST – 8pm EST

Weekend Hours: Saturday and Sunday Closed

www.dnpphoto.com

© 2000-2014 DNP IMS America Corp. All rights reserved

Reproduction in whole or part without written permission is prohibited. Specifications subject to change without notice.

All other trademarks are properties of their respective owners.